

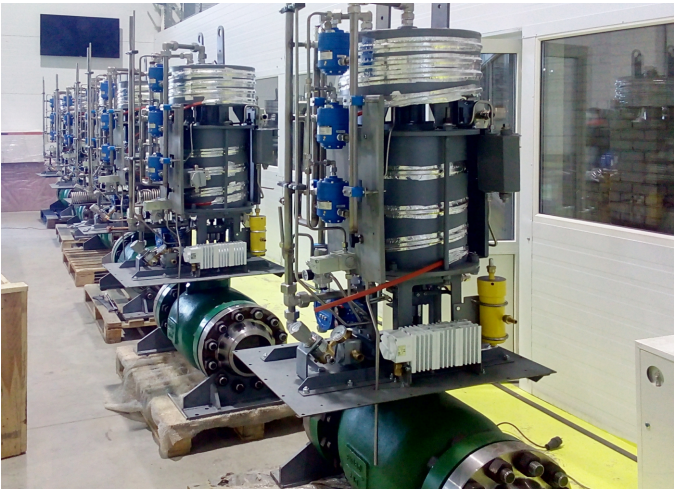
CJSC «Regulator» designs and manufactures industrial valves for the oil and gas industry, power plants and chemical enterprises, and also conducts research of regulating of the fluid flow.

The design and technological department of the company perform all types of calculations, designs products of any complexity and renders engineering services for the development of new types of products.

The production is carried out on modern high-tech equipment for a full technological cycle: from the work piece to assembly and testing. Certified factory laboratory conducts all types of quality control of finished products.

Equipment produced by CJSC «Regulator» is supplied to hundreds of enterprises in Russia and abroad.

The company introduces innovations actively and develops production of new types of valves every year.



REGULATOR
SCIENTIFIC AND MANUFACTURING COMPANY

Design and manufacture
of the industrial valves

GLOBE CONTROL PLUG TYPE VALVES

DN 10...400, PN 16...250

Working medium's temperature:
–60...+500°C

Actuator:
electric, diaphragm, piston, manual

Options:
bellows, high-temperature, anti-cavitation



ANTI-SURGE VALVES

ANTI-SURGE VALVES

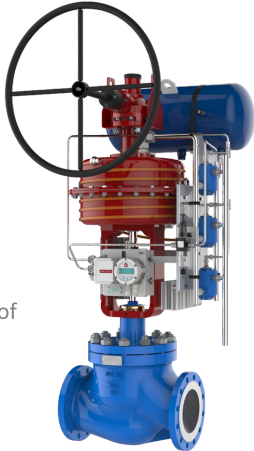
DN 150...350, PN 16...250

Actuator: diaphragm

Opening time: < 2 sec

Closing time: < 3 sec

Options: with heating system, explosionproof



ELECTROPNEUMATIC SMART POSITIONERS

Explosionproof: flameproof enclosure, 1ExdIICT6

Enclosure class: IP65

Working temperature:
–40...+75°C

Extended interface: HART

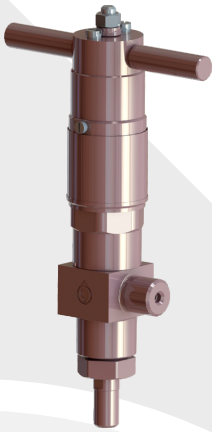


ULTRA-HIGH PRESSURE
ON-OFF VALVES

DN 3...32, PN 1600...3200

Working medium's temperature:
–50...+150°C

Actuator: electric, manual



AXIAL ON-OFF-AND-CONTROL
VALVES

DN 100...700, PN 40...200

Working medium's temperature:
–10...+200°C

Actuator:
electric, diaphragm, piston, manual



ANTI-SURGE VALVES
BY «GAZPROM» STANDARD

DN 100...700, PN 16...250

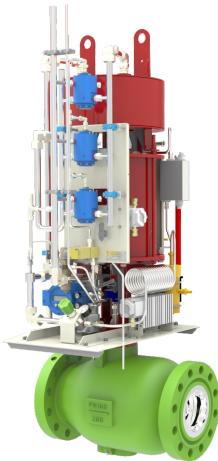
Working medium's temperature:
–10...+80°C (temporary up to +110°C)

Actuator: diaphragm, piston

Opening time: < 2 sec

Closing time: < 3 sec

Options: with heating system, explosionproof



SPRING-LOADED SAFETY VALVES

DN 15...200, PN 16...250

Working medium's temperature: –70...+350°C

Options: bellows, with popping unit

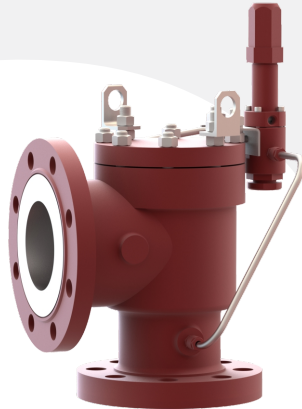


PILOT-OPERATED SAFETY VALVES

DN 25...200, PN 16...320

Working medium's temperature:
–60...+180°C

Options: with popping unit,
backpressure compensation

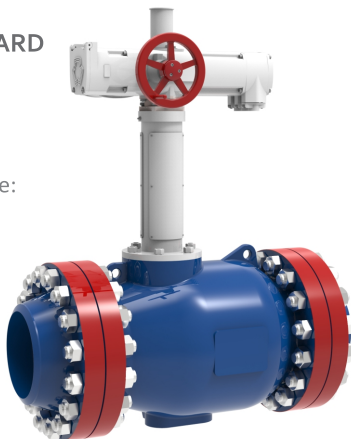


AXIAL CONTROL VALVES
BY «TRANSNEFT» STANDARD

DN 50...700, PN 16...125

Working medium's temperature:
–35...+80°C

Actuator: electric



DIAPHRAGM ACTUATORS

Membrane seal diameter:
250, 320, 400, 500 mm

Stem travel:
20, 25, 30, 35, 40, 60, 100 mm

Fail position: normally open, normally close

Air supply: 4 bar, 6 bar

Working temperature: –65...+70°C



SPRING-LOADED SAFETY VALVES
BY «TRANSNEFT» STANDARD

DN 25...200, PN 16...100

Working medium's temperature: –20...+80°C

Options: with popping unit,
increased seismic capacity



SWITCHING DEVICES AND BLOCKS OF SAFETY VALVES

DN 3...300, PN 6...250

Working medium's
temperature: –60...+350°C

